

2 Main Street MONTVILLE QLD

4 3 5

Private Acreage Oasis, Walk to Montville!

Situated down a long private driveway you will find this meticulously maintained executive brick and tile home. Nestled amongst landscaped terraced gardens which include stunning sandstone rock walls and picture-perfect views down the valley. Comprising just over 4 hectares (almost 10 acres) this property has its own permanent running creek, fenced into numerous paddocks for livestock plus a three bay, barn style shed with kitchenette and bathroom. There is also a carport for a float or camper trailer. Surrounded by rolling green hills, quint essential to the Hinterland, this is the complete acreage package for those looking for the perfect escape to the country.

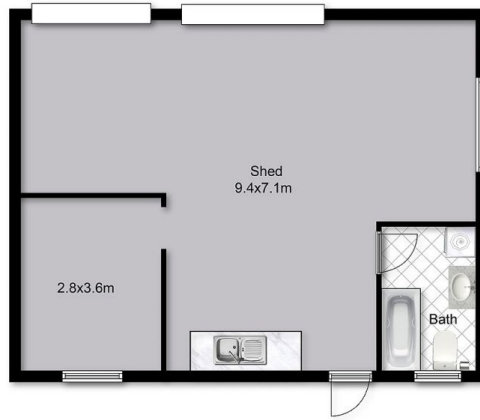
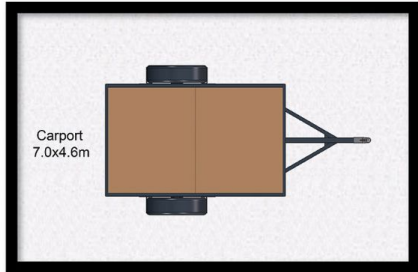
Features of the executive style home include

Price : \$ 1,295,000
Building Size : 28 sqm
Land Size : 40100 sqm
View : <https://www.brantandbernhardt.com.au/sale/qld/sunshine-coast/montville/residential/house/6983317>



Dee Bernhardt
0428 573 170

2 Main Street MONTVILLE



Approximate Areas	
Internal:	253.7 m ²
External:	46.2 m ²
Garage:	36.3 m ²
Shed:	66.7 m ²
Total Area:	402.9 m²

This floor plan is intended as a guide only. Layout dimension are approximate only. No representation or warranties of any nature whatsoever are given or intended. Any person using this information should rely on their own enquiries.