



4/10 Wattle Street MALENY QLD

3 2 3

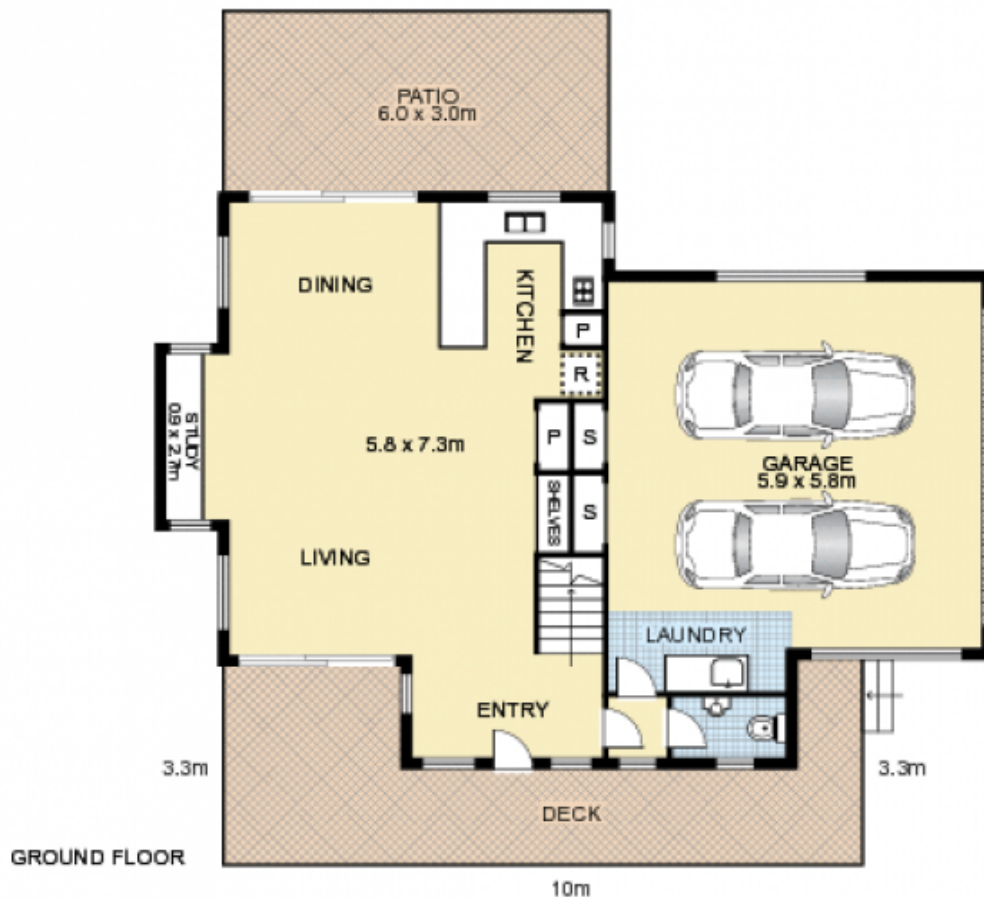
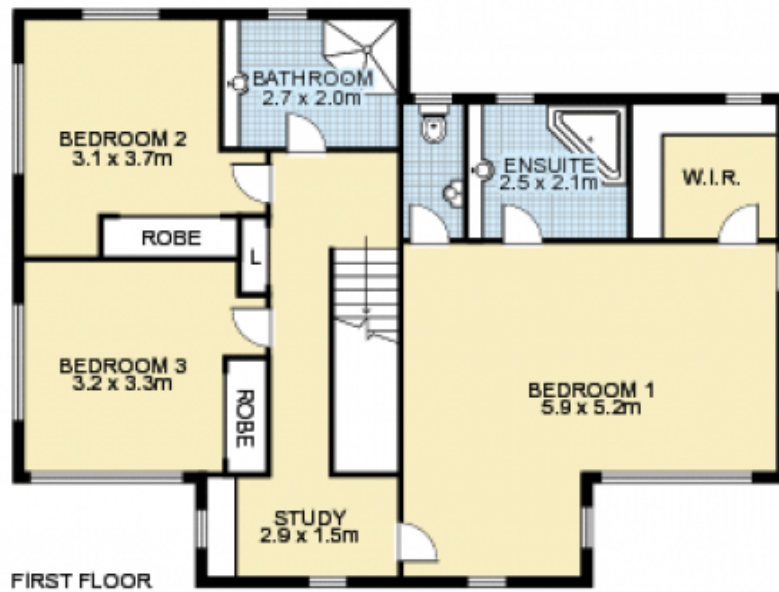
The current owner bought this elegant townhouse off the plan 14 years ago and has meticulously maintained the property ever since. Privately positioned in a boutique complex of 4 townhouses, number four features an established, landscaped garden with both North and South facing entertainment areas. The private front verandah features views over the garden and all the way to the main street of Maleny. A quick walk will find you enjoying all that Maleny has to offer.

- Downstairs features a generous open plan living, dining and lounge area complete with a study nook
- Chefs kitchen includes granite tops, quality appliances, gas cooktop, full size oven, pantry and large breakfast bar
- North facing patio is complete with a gazebo, perfect

Price : \$ 490,000
Building Size : 21 sqm
View : <https://www.brantandbernhardt.com.au/sale/qld/sunshine-coast/maleny/residential/unit/6983331>



Susan Brant
0428 573 170



4/10 Wattle Street, MALENY



Approx. Internal Area : 179.3m²
 Extemal Area : 41.4m²
 Total Area : 220.7m²

This floor plan is intended as a guide only. Layout dimensions are approximate only. No representations or warranties of any nature whatsoever are given or intended. Any person using this information should rely on their own enquiries. Floor Plans by SURROUNDPIX.