

**156 Maleny-Kenilworth Road Witta QLD**

4  3  5 

Cedar Park is an iconic, picturesque acreage property within minutes to the vibrant Sunshine Coast Hinterland township of Maleny. A long private, sealed driveway leads you to the traditional, circa 1918 Queenslander homestead, steeped in character. Cedar Park homestead is perfectly positioned on a gentle rise, ensuring stunning views of the Conondale Valley and ranges with North Easterly views over the Hinterland, right out to the coast.

The rich, fertile, red volcanic soil is perfect for growing ample grass for livestock but also the magnificent garden that has been established at Cedar Park. The property is gently sloping all usable and is fully fenced with established pasture, watering points, horse stable and tack room.

Cedar Park Homestead -

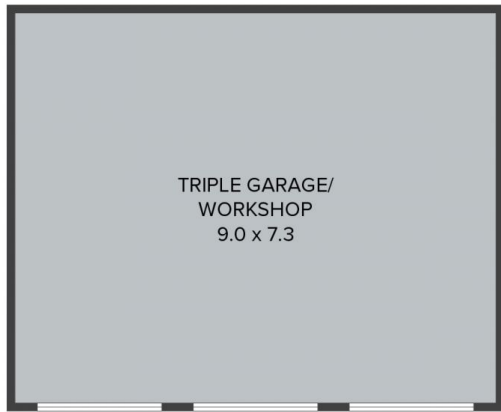
**Price** : \$ 2,200,000  
**Building Size** : 209 sqm  
**Land Size** : 2.34 ha  
**View** : <https://www.brantandbernhardt.com.au/sale/qld/south/witta/residential/house/7489242>



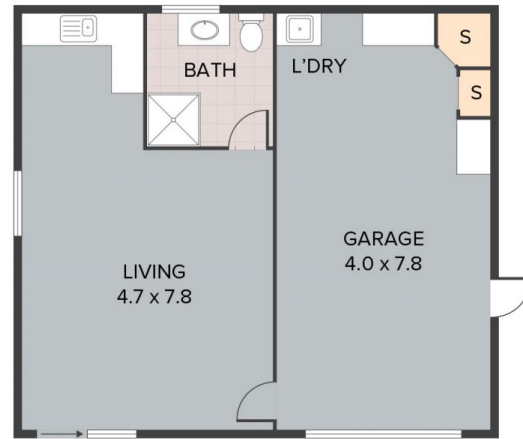
**Susan Brant**  
0428 573 170



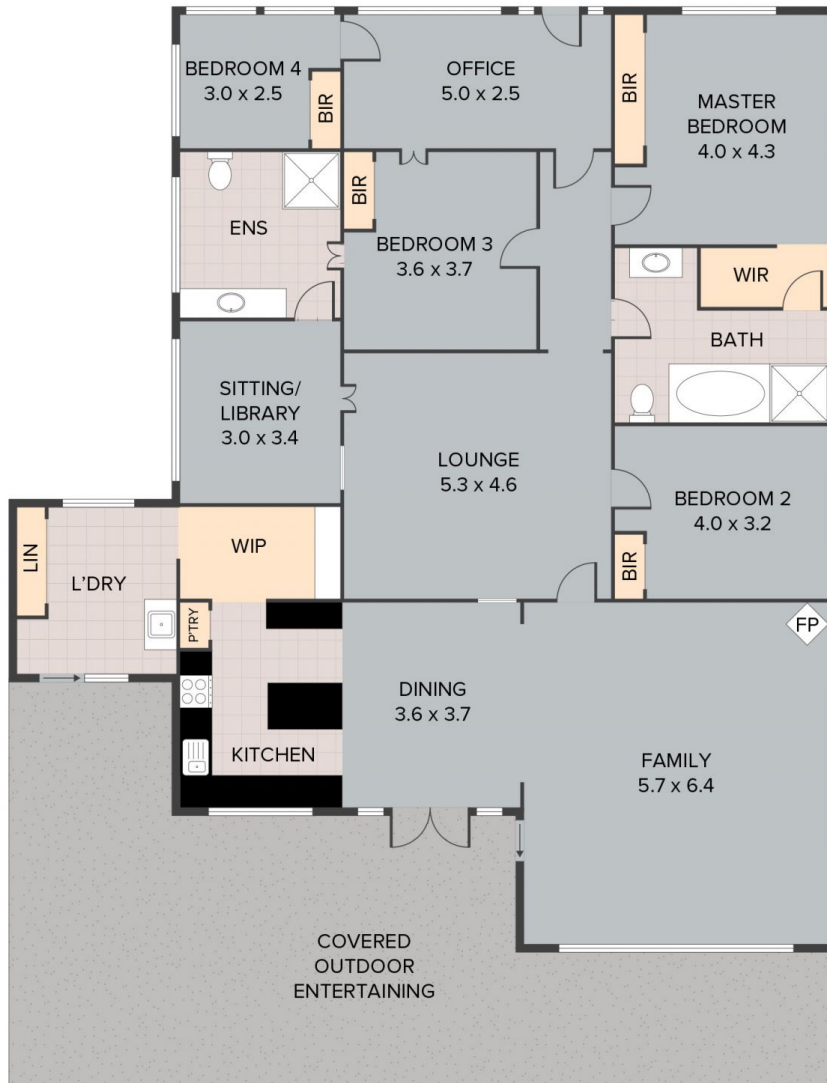
**Dee Bernhardt**  
0428 573 170



(NOT IN POSITION)



SELF-CONTAINED UNIT  
(NOT IN POSITION)



156 Maleny Kenilworth Road, Witta

TOTAL APPROX. FLOOR AREA 209 SQ.M

Whilst every attempt has been made to ensure the accuracy of the floor plan contained here, measurements of doors, windows, rooms and any other items are approximate and no responsibility is taken for any error, omission, or misstatement. This plan is for illustrative purposes only and should be used as such by any prospective purchaser.