



27 Leigha Place Kureelipa QLD

4 3 2

Character filled, quality home situated in a quiet, no through street within minutes to the beautiful Hinterland township of Mapleton and major centre of Nambour. Positioned at the top of a 4501m2 block and built by renowned local builders Tru Build. For family buyers there is access to local school buses and a variety of both private and public schools on offer.

Price : \$ 841,000
Land Size : 4501 sqm
View : <https://www.brantandbernhardt.com.au/sale/qld/sunshine-coast/kureelipa/residential/house/7571596>

Features upstairs include -

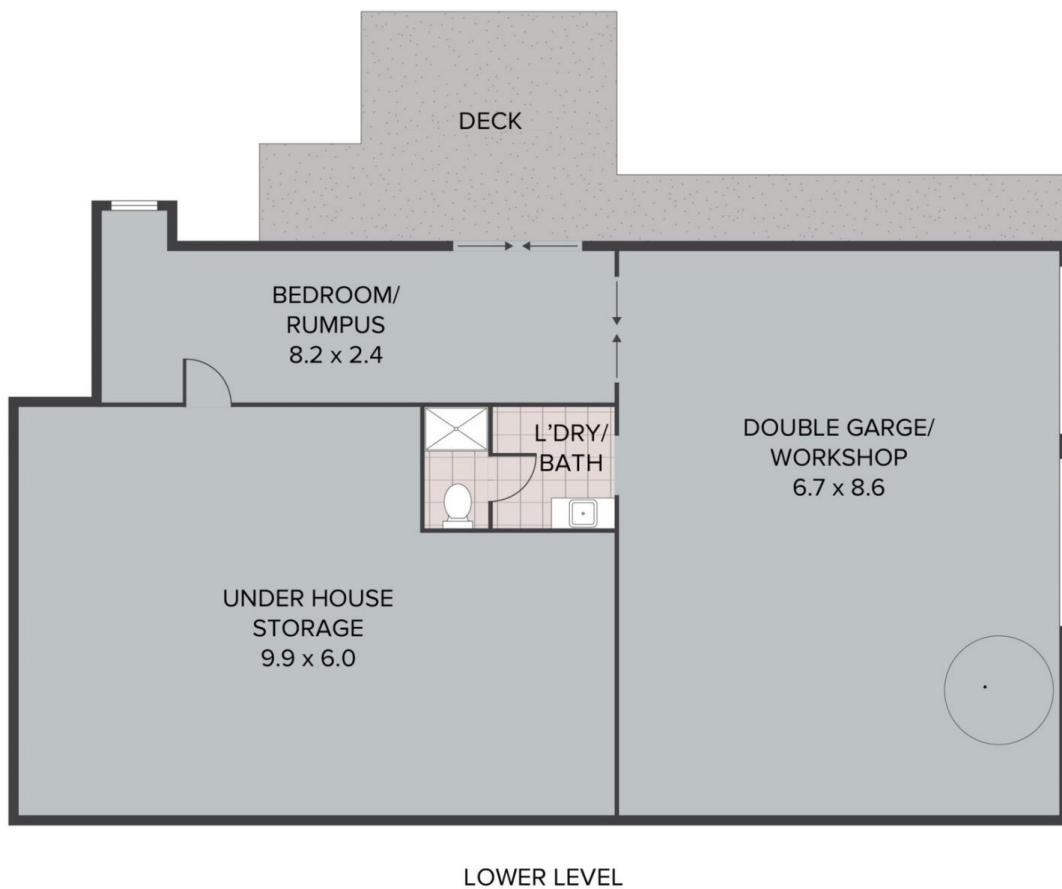
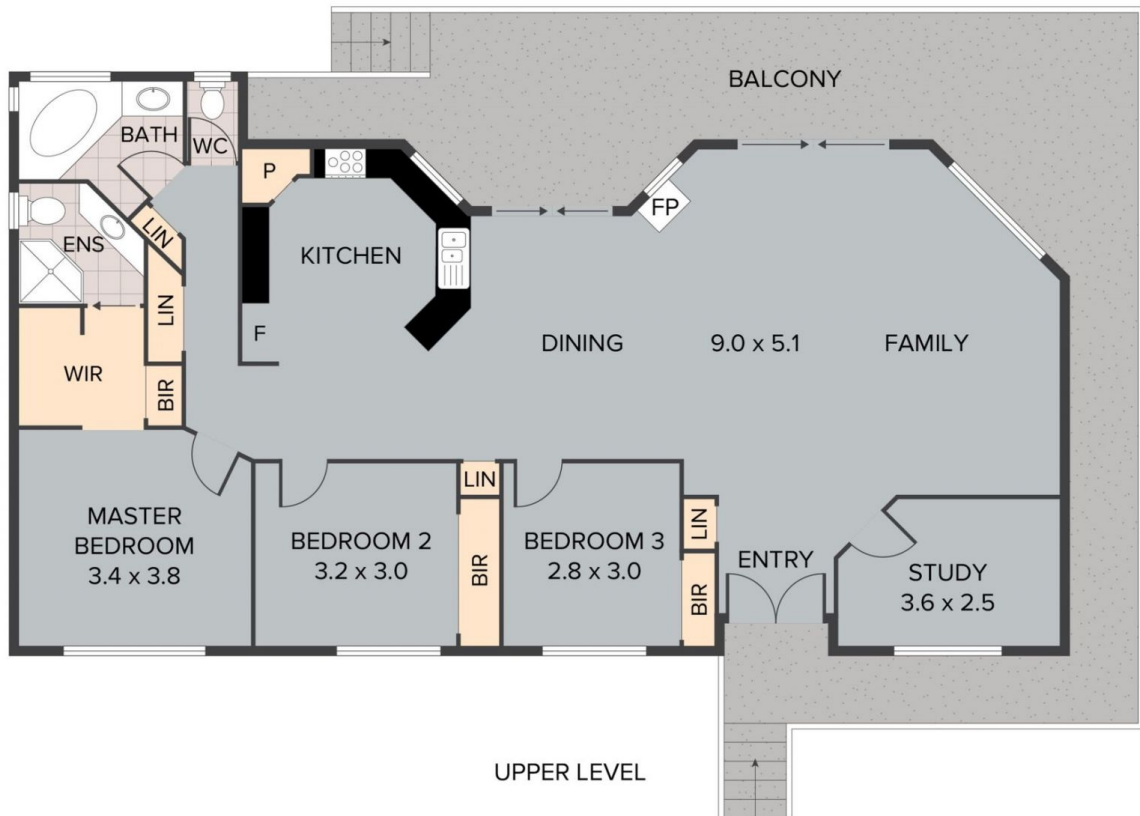
- Spacious open plan living, dining and kitchen complete with gleaming timber floors, high ceilings, split system air conditioning, inbuilt displays nooks to feature those special pieces, wood fireplace and two lots of double, sliding glass doors leading out to the North facing, covered decks
- This generous deck wraps around from the front entrance to the back of the home creating plenty of space to



Susan Brant
0428 573 170



Dee Bernhardt
0428 573 170



27 Leigha Place, Kulreelpa

Whilst every attempt has been made to ensure the accuracy of the floor plan contained here, measurements of doors, windows, rooms and any other items are approximate and no responsibility is taken for any error, omission, or misstatement. This plan is for illustrative purposes only and should be used as such by any prospective purchaser.