



38 Herron Road Conondale QLD

2 1

Charming Circa 1900's Country Cottage With Creek On One Acre!

Nestled in a serene cul-de-sac, this charming country cottage offers a tranquil retreat within walking distance of Conondale's main attractions. Spanning 3,743 square meters between Maleny and Kenilworth in the Sunshine Coast Hinterland, this property boasts a picturesque valley view and private access to Elaman Creek, part of the Mary River.

Dating back to the 1900s and once the farmhouse for Mary Downs Dairy, this unique timber cottage holds historical significance, reflecting Conondale's early settlement era.

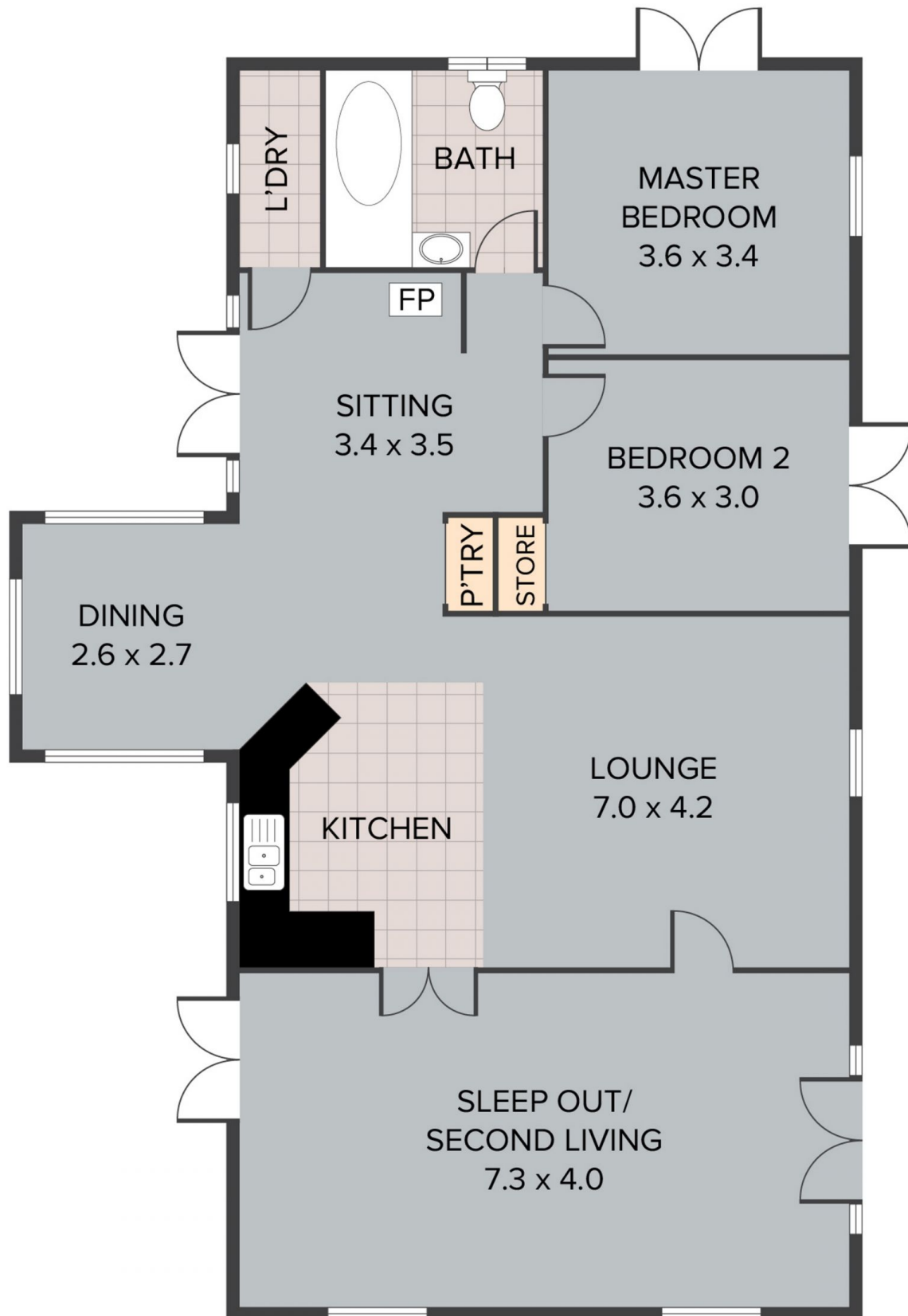
Key features include:

? Two bedrooms with French door access to the garden, a

Price : \$ 735,000
Building Size : 92 sqm
Land Size : 3743 sqm
View : <https://www.brantandbernhardt.com.au/sale/qld/south/conondale/residential/house/7644617>



Susan Brant
0428 573 170



38 Herron Road, Conondale

TOTAL APPROX. FLOOR AREA 92 SQ.M

Whilst every attempt has been made to ensure the accuracy of the floor plan contained here, measurements of doors, windows, rooms and any other items are approximate and no responsibility is taken for any error, omission, or misstatement. This plan is for illustrative purposes only and should be used as such by any prospective purchaser.