



46 Ravensberg Drive Witta QLD

3 2 3

Ravensberg Cottage, A Pure Delight, Minutes to Maleny!

Ravensberg Cottage, a charming Cape Cod-style haven, is discreetly nestled amidst lush, established gardens, and tall trees, creating an enchanting retreat set back from the road. A graceful entry along a curved driveway, adorned with vintage-style lamp posts and framed by palms, guarantees privacy as you approach this magical abode.

Highlights of this stunning home, cherished by the current owner for 28 peaceful years, include:

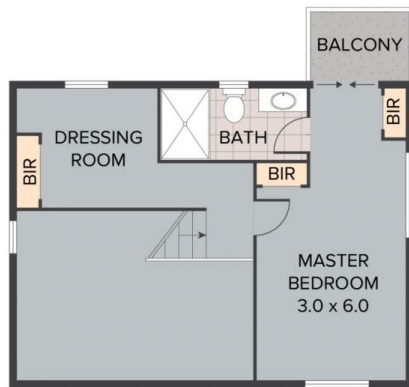
? Designed by architect Adrian Poole and built by an award-winning builder, this circa 1989, solid brick home, features exquisite cathedral-style timber ceilings throughout.

? Dormer windows adds character and allure to the

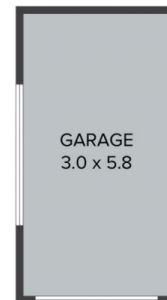
Price : \$ 1,150,000
Building Size : 150 sqm
Land Size : 4554 sqm
View : <https://www.brantandbernhardt.com.au/sale/qld/south/witta/residential/house/7706214>



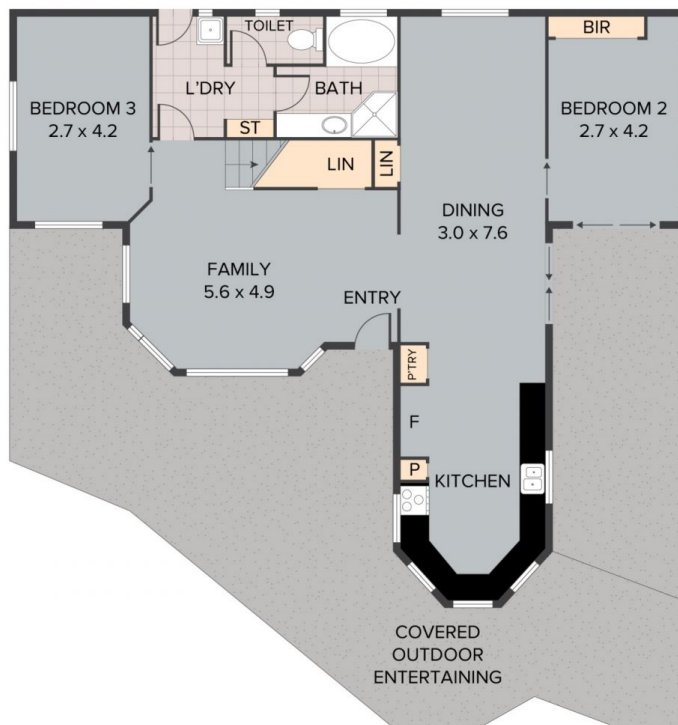
Susan Brant
0428 573 170



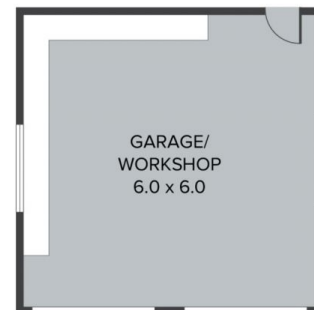
FIRST FLOOR



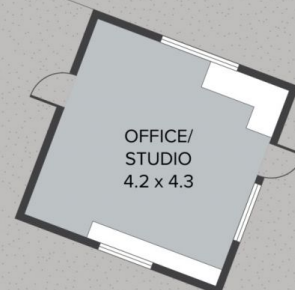
(NOT IN POSITION)



GROUND FLOOR



(NOT IN POSITION)



46 Ravensberg Drive, Witta
TOTAL APPROX. FLOOR AREA 150 SQ.M

Whilst every attempt has been made to ensure the accuracy of the floor plan contained here, measurements of doors, windows, rooms and any other items are approximate and no responsibility is taken for any error, omission, or misstatement. This plan is for illustrative purposes only and should be used as such by any prospective purchaser.