



40 Crystal Street Mapleton QLD

4  2  2 

For those who appreciate impeccable design, this residence embodies sheer elegance and easy living. Proudly positioned on an elevated 1,436m² block, with gorgeous views and in a quiet no through cul-de-sac. This property is certainly a testament to thoughtful curation, presenting a turnkey property that's equally ideal for a discerning family or a savvy investor.

Price : UNDER CONTRACT
Building Size : 284 sqm
Land Size : 1436 sqm
View : <https://www.brantandbernhardt.com.au/sale/qld/sunshine-coast/mapleton/residential/house/7901620>

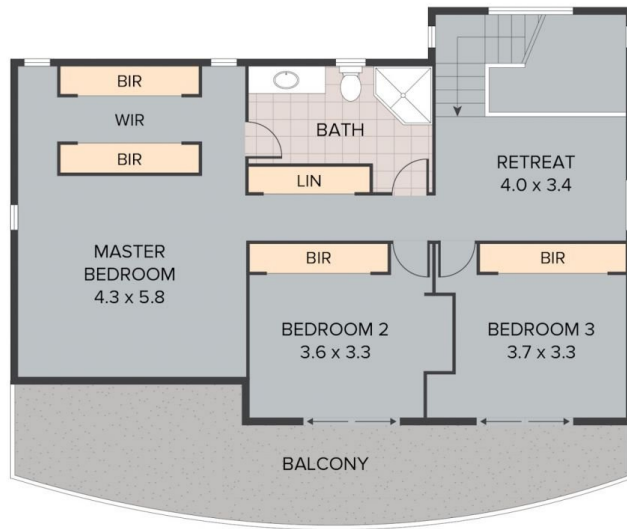
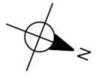
The magnetic charm of this home lies in the presence of a pristine freshwater spring on-site, awe-inspiring Hinterland and ocean views, terraced gardens and a multi-story residence that exudes a welcoming allure.

This stunning home features -

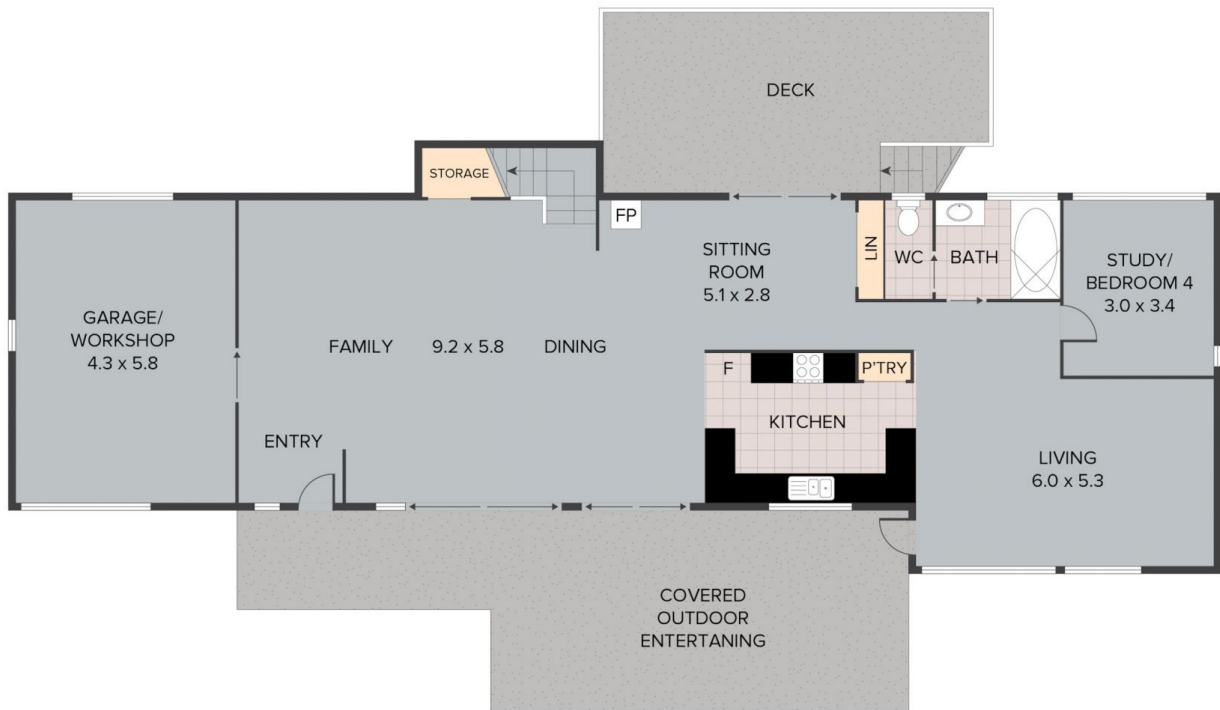
- Open plan living with exposed timber beams creates a modern, country barn feel. The pitched ceilings promote



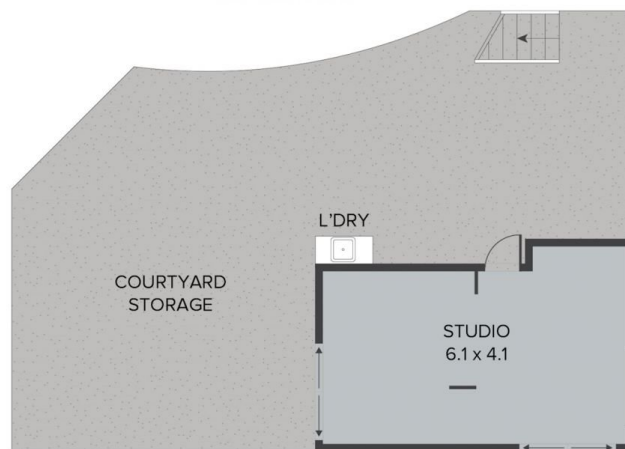
Susan Brant
0428 573 170



UPPER LEVEL



GROUND LEVEL



LOWER LEVEL

40 Crystal Street, Mapleton

TOTAL APPROX. FLOOR AREA 284 SQ.M

Whilst every attempt has been made to ensure the accuracy of the floor plan contained here, measurements of doors, windows, rooms and any other items are approximate and no responsibility is taken for any error, omission, or misstatement. This plan is for illustrative purposes only and should be used as such by any prospective purchaser.